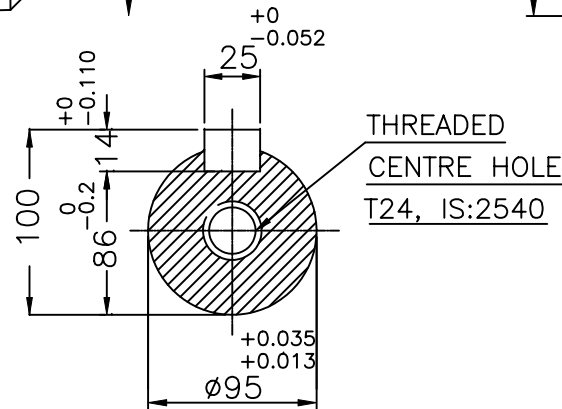
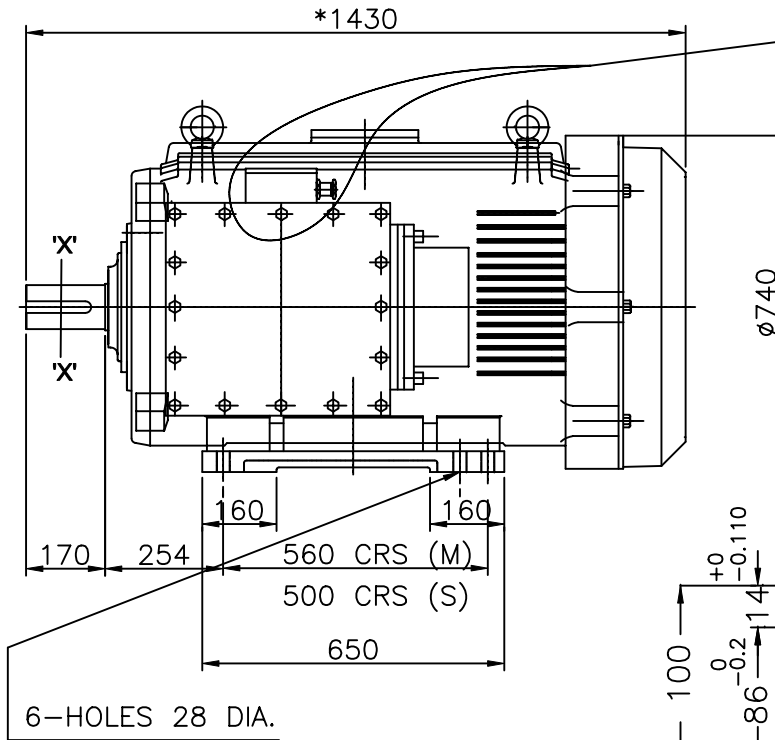
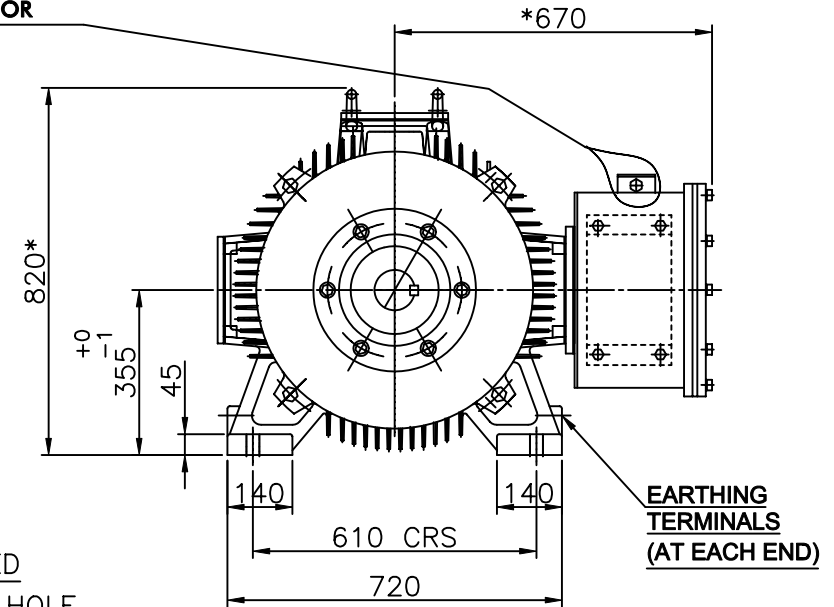


These drawing and design are the property of Marathon Electric Motors (India) Limited. These must not be copied or lent to any other party without the written consent of Marathon Electric Motors (India) Limited.

**AUX. TERMINAL BOX  
FOR SPACE HEATER  
WITH D/COMPRESSION  
CABLE GLAND SIZE-1X2CX2.5mm<sup>2</sup>  
IS OPTIONAL-WILL BE PROVIDED  
WHEN SPACE HEATER IS CALLED FOR**



**SECTION-"X-X"**



**EARTHING  
TERMINALS  
(AT EACH END)**

**MAX. CABLE SIZE-2X3CX300mm<sup>2</sup>**

**marathon<sup>®</sup>  
electric**  
A Regal Beloit Company

Marathon Electric Motors (India) Limited  
Paharpur Works, 58 Taratala Road.  
Kolkata - 700024 , INDIA

**NOTE:**  
1.0 ALL DIMENSIONS ARE IN mm EXCEPT OTHERWISE SPECIFIED  
2.0 FOR TOLERANCES OF DEMENSIONS(NOT MENTIONED) REF. TO IS:2102  
3.0 DIMENSIONS MARKED \* ARE MAXIMUM VALUES.

TITLE				DRAWING NO.		REV.
OUTLINE DIMENSIONAL DRAWING FOR D355 S/M FRAME FOOT MOUNTED TEFC-SC MOTOR. (AS PER IS: 8223)				CM1773		04
DRAWN	S.BHOWMICK	01.01.2000		SCALE IF ANY		
CHECKED	S.BHOWMICK			SIGN		
APPRVD.	R.RANJAN			DATE		
				N.T.S		

REV. 04 CM1773 DRAWING No.

REVISION	DATE	DETAIL OF REVISION	DONE BY	APPRVD
04	08.08.09	AUX. T/BOX FOR SP. HEATER ADDED.		
03	14.12.07	COMPANY NAME AND LOGO CHANGED		
02	27.08.04	DRAWING GENERALLY REVISED		
01	12.03.04	DRAWING GENERALLY REVISED		