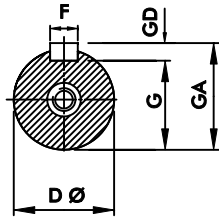
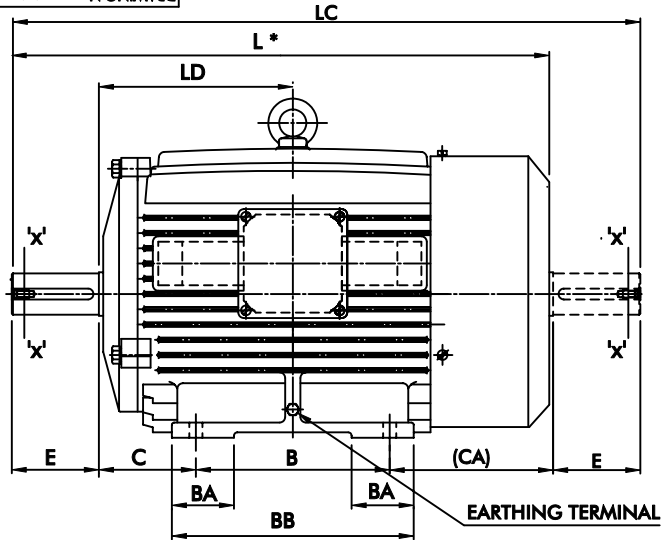
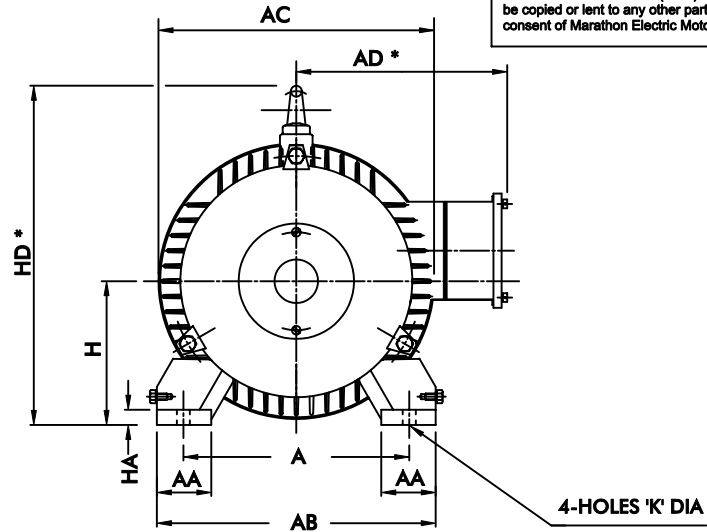


These drawing and design are the property of Marathon Electric Motors (India) Limited. These must not be copied or lent to any other party without the written consent of Marathon Electric Motors (India) Limited.



SECTION-"XX"



7	12-D132M	2-8	132	+0 -0.5	38	+0.018 +0.002	80	41	10	+ 0 -0.036	8	+ 0 -0.090	33	+ 0 -0.2	216	178	89	12	256	50	222	57	14	317	260	205	178	500 [°]	155	582 [°]	T12								
6	12-D132S	2-8	132	+0 -0.5	38	+0.018 +0.002	80	41	10	+0 -0.036	8	+ 0 -0.090	33	+ 0 -0.2	216	140	89	12	256	50	184	57	14	317	260	205	159	458	155	544 [°]	T12								
5	12-D112M	2-8	112	+0 -0.5	28	+0.009 -0.004	60	31	8	+ 0 -0.036	7	+ 0 -0.090	24	+ 0 -0.2	190	140	70	12	222	45	170	50	14	284	220	180	165.5 [°]	400 [°]	157.5 [°]	451.5 [°]	T10								
4	12-D100L	2-8	100	+0 -0.5	28	+0.009 -0.004	60	31	8	+0 -0.036	7	+ 0 -0.090	24	+ 0 -0.2	160	140	63	12	192	38	170	50	12	263	220	175	133	374	125	448 [°]	T10								
3	12-D90L	2-8	90	+0 -0.5	24	+0.009 -0.004	50	27	8	+0 -0.036	7	+ 0 -0.090	20	+ 0 -0.2	140	125	56	10	170	35	155	45	12	236	187	152	118.5	335	105	386	T10								
2	12-D90S	2-8	90	+0 -0.5	24	+0.009 -0.004	50	27	8	+ 0 -0.036	7	+ 0 -0.090	20	+ 0 -0.2	140	100	56	10	170	35	130	40	12	236	187	152	106	310	105	361	T10								
1	12-D80	2-8	80	+0 -0.5	19	+0.009 -0.004	40	21.5	6	+ 0 -0.030	6	+ 0 -0.030	15.5	+ 0 -0.2	125	100	50	10	156	34	125	32.5	12	220	167	144	100	298	102	332	T8								
PART NO.	FRAME SIZE	NO.OF POLE	NOM	TOL	NOM	TOL	E SHAFT EXTN.	GA	NOM	TOL	NOM	TOL	NOM	TOL	A	B	C	K	FIXING DIMENSIONS								AB	AA	BB	BA	HA	HD	AC	AD	LD	L	CA	LC	TAPPED CENTER HOLE AT SHAFT END (AS PER IS: 2540)
			H CENTRE HEIGHT		D SHAFT DIA				F		GD		G																										

07	06.08.09	PT.NO.5 DIM. 'L' 400 WAS 386 & NOTE 5 DELETED		
06	14.06.08	'L' & 'LC' DIMENSION FOR D112M FRAME CHANGED FROM 422 & 487.5 TO 386 & 451.5 RESPECTIVELY.		
05	14.12.07	COMPANY NAME AND LOGO CHANGED		
04	21.10.02	'LC' DIMN. FOR 12-D132S CHANGED FROM 536 TO 544		
03	28.01.02	'LC' DIMN. FOR 12-D100M CHANGED FROM 436 TO 448 'LC' DIMN. FOR 12-D112M CHANGED FROM 484.5 TO 487.5 'L' DIMN. FOR 12-D132M CHANGED FROM 492 TO 496 'LC' DIMN. FOR 12-D132M CHANGED FROM 574 TO 582	K.D.	R.R
02	24.11.2000	PT.NO. 4,5,6&7, "AC" "L"&"LC" DIMS. CHANGED 260 WAS 254, 220 WAS 215, 492 WAS 500, 458 WAS 460, 422 WAS 434, 374 WAS 386, 574 WAS 582,536 WAS 544, 484.5 WAS 496.5 & 436 WAS 448		
01	27.08.99	DIMS 'CA', 'LC' ADDED FOR D/EXTN. MOTOR	B.B	B.N
REVISION	DATE	DETAIL OF REVISION	DONE BY	APPRVD

D.D.N. NO. C12DD1514
D.C.N. NO. C12DC0552

NOTE:
1.0 ALL DIMENSIONS ARE IN mm EXCEPT OTHERWISE SPECIFIED.
2.0 FOR GENERAL TOLERANCE OF DIMENSIONS REFER TO IS:2102.
3.0 DIMENSIONS MARKED * ARE MAXIMUM VALUES.
4.0 SHAFT SHOULDER AT NON DRIVING END IS NOT AVAILABLE FOR DOUBLE EXTN. MOTOR.



Marathon Electric Motors (India) Limited
Paharpur Works, 58 Taratala Road.
Kolkata - 700024 , INDIA

TITLE	OUTLINE DIMENSIONAL DRAWING FOR 12-D80 TO 12-D132M CHALLENGER MOTOR. (AS PER IS: 1231)									
	DRAWN	B.BISWAS		26.12.96		DRAWING NO.		REV.		
CHECKED	S.BHOWMICK				SCALE IF ANY	CM1366		07		
APPRVD.	R.RANJAN									
		SIGN	DATE	N.T.S						