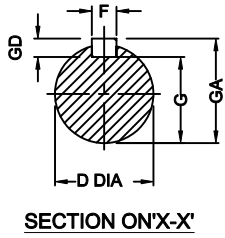


These drawing and design are the property of Marathon Electric Motors (India) Limited. These must not be copied or lent to any other party without the written consent of Marathon Electric Motors (India) Limited.



1	KF90L	2-8	90	+0 -0.5	24	+0.009 -0.004	50	27	8	+0 -0.036	7	+0 -0.090	20	+0 -0.2	140	125	56	10	170	40	155	45	15	317	190	227	360
2	KF112M	2-8	112	+0 -0.5	28	+0.009 -0.004	60	31	8	+0 -0.036	7	+0 -0.090	24	+0 -0.2	190	140	70	12	230	40	180	50	15	315	255	330	440
3	KF132M	2-8	132	+0 -0.5	38	+0.018 +0.002	80	41	10	+0 -0.036	8	+0 -0.090	33	+0 -0.2	216	178	89	12	280	58	218	50	20	350	294	350	500
4	KF160L	2-8	160	+0 -0.5	42	+0.018 +0.002	110	45	12	+0 -0.036	8	+0 -0.090	37	+0 -0.2	254	254	108	15	355	80	305	82	30	406	342	400	656
5	KF180L	2-8	180	+0 -0.5	48	+0.018 +0.002	110	51.5	14	+0 -0.036	9	+0 -0.090	42.5	+0 -0.2	279	279	121	15	370	80	327	82	30	450	395	425	706
6	KF200L	2-8	200	+0 -0.5	55	+0.030 +0.011	110	59	16	+0 -0.043	10	+0 -0.090	49	+0 -0.2	318	305	133	19	390	90	356	88	25	505	450	450	774
7	KF225M	2	225	+0 -0.5	55	+0.030 +0.011	110	59	16	+0 -0.043	10	+0 -0.090	49	+0 -0.2	356	311	149	19	448	95	368	95	30	548	515	480	860
8	KF225M	4-8	225	+0 -0.5	60	+0.030 +0.011	140	64	18	+0 -0.043	11	+0 -0.110	53	+0 -0.2	356	311	149	19	448	95	368	95	30	548	515	480	890
9	KF250M	2	250	+0 -0.5	60	+0.030 -0.011	140	64	18	+0 -0.043	11	+0 -0.110	53	+0 -0.2	406	349	168	24	484	121	420	115	30	590	515	470	966
10	KF250M	4-8	250	+0 -0.5	65	+0.030 +0.011	140	69	18	+0 -0.043	11	+0 -0.110	58	+0 -0.2	406	349	168	24	484	121	420	115	30	590	515	470	966
11	KF280M	2	280	+0 -1	65	+0.030 +0.011	140	69	18	+0 -0.043	11	+0 -0.110	58	+0 -0.2	457	419	190	24	540	142	500	120	32	660	555	625	1060
12	KF280M	4-8	280	+0 -1	75	+0.030 +0.011	140	79.5	20	+0 -0.052	12	+0 -0.110	67.5	+0 -0.2	457	419	190	24	540	142	500	120	32	660	555	625	1060
13	KF315M	2	315	+0 -1	65	+0.030 +0.011	140	69	18	+0 -0.043	11	+0 -0.110	58	+0 -0.2	508	457	216	28	600	170	540	135	36	722	612	645	1173
14	KF315M	4-8	315	+0 -1	80	+0.030 +0.011	170	85	22	+0 -0.052	14	+0 -0.110	71	+0 -0.2	508	457	216	28	600	170	540	135	36	722	612	645	1203
15	KF315L	2	315	+0 -1	65	+0.030 +0.011	140	69	18	+0 -0.043	11	+0 -0.110	58	+0 -0.2	508	508	216	28	600	170	591	135	36	722	612	645	1273
16	KF315L	4-8	315	+0 -1	80	+0.030 +0.011	170	85	22	+0 -0.052	14	+0 -0.110	71	+0 -0.2	508	508	216	28	600	170	591	135	36	722	612	645	1303
17	KF355M	4-8	355	+0 -1	95	+0.035 +0.013	170	100	25	+0 -0.052	14	+0 -0.110	84	+0 -0.2	610	560	254	28	720	140	650	160	45	820	740	635	1440
18	KF355L	4-8	355	+0 -1	95	+0.035 +0.013	170	100	25	+0 -0.052	14	+0 -0.110	84	+0 -0.2	610	630	254	28	720	140	720	160	45	820	740	635	1570
PART.NO	FRAME SIZE	NO OF POLES	H(CEN HEIGHT)		D-DIA		E SHAFT EXTN	GA	F		GD		G		FIXING DIMENSIONS				AB	AA	BB	BA	HA	HD	AC	AD	L
			NOM	TOL	NOM	TOL			NOM	TOL	NOM	TOL	NOM	TOL	A	B	C	K									

**TERMINATION AS PER GAS GR.- IIA & IIB**

ALL DIMENSIONS ARE IN mm

REVI.	DATE	DETAILS OF REVISION	DONE BY	APPRVD.

**NOTE:**

- TOP TERMINAL BOX POSITION IS A STD. FEATURE FOR KF90L AND AN OPTIONAL FEATURE FOR KF355L.
- FOR FRAME SIZE KF90L TO KF132M CABLE PLATE TO ACCOMMODATE COMPRESSION TYPE FLP CABLE GLAND IS PROVIDED AS STANDARD. MOTORS WITH CONICAL TYPE FLP CABLE GLAND, AS REQUIRED FOR GAS GR.-I (GAD - CM1386) IS PROVIDED AS OPTIONAL FEATURE.
- FOR FRAME SIZE KF160L TO KF355L CONICAL TYPE FLP CABLE GLAND, AS REQUIRED FOR GAS GR.-I (GAD - CM1386) IS PROVIDED AS STANDARD. MOTORS WITH CABLE PLATE TO ACCOMMODATE COMPRESSION TYPE FLP CABLE GLAND IS AN OPTIONAL FEATURE.
- FOR DIMENSIONS AND TOLERANCES REFER IS:1231,IS:2048,IS:2102

		Marathon Electric Motors (India) Limited Paharpur Works, 58 Taratala Road. Kolkata - 700024, INDIA	
<b>OUTLINE DIMENSIONAL DRAWING FOR KF90L TO KF355L FLAMEPROOF MOTOR (SUITABLE FOR GAS GR.- IIA &amp; IIB) (IS:1231 / IS:2148)</b>			
TITLE			
DRAWN	S.B	24.3.96	DRAWING NO.
CHECKED	S.BHOWMICK		REV.
APPRVD.	R.RANJAN		<b>CM627</b>
SCALE			<b>00</b>